

Plinius Inspire Integrated Amplifier USB Driver Installation

The USB input of the Inspire 880 and Inspire 980 integrated amplifier is supported by the following operating systems:

- Windows XP – using the provided driver
- Windows 7 (32 and 64 bit) – using the provided driver
- Windows 8 (32 and 64 bit) – using the provided driver
- Windows 10 (32 and 64 bit) – using a driver built into the operating system
- MacOS (10.6.4 and later) – using a driver built into the operating system.

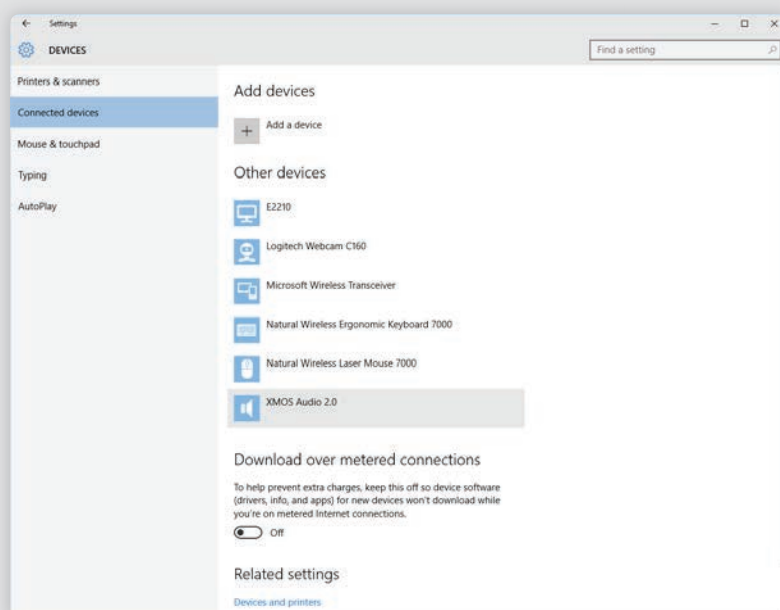
Windows 10 USB Driver Installation:

1. Connect the Inspire Integrated Amplifier to your computer using a USB A to USB B cable.

- » Power up the Inspire Integrated Amplifier and select the USB input. The XMOS Audio 2.0 drivers will install automatically.

2. Wait a few minutes to allow the installation to finish.

- » Installation progress and confirmation can be viewed in *Settings > Devices > Connected Devices*

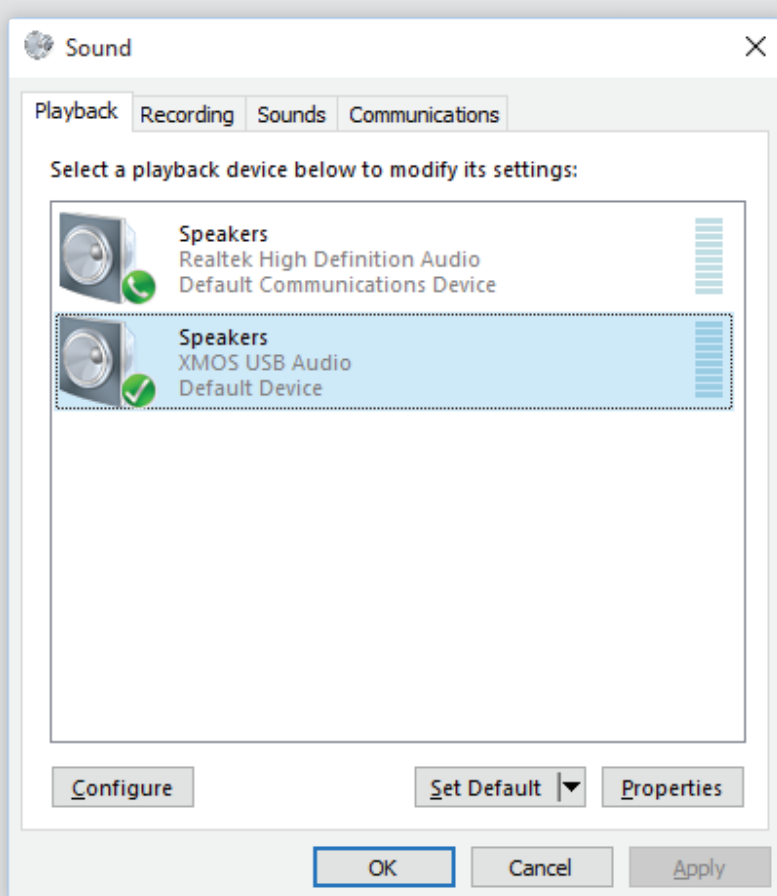


Plinius Inspire Integrated Amplifier USB Driver Installation

Windows 10 USB Driver Installation (Continued):

3. Open the Control Panel and open Sound to select the Inspire Integrated Amplifier's USB input as your computer's active audio output.

- » Select the *Playback* tab and click on *XMOS USB Audio*.
- » Click on *Set Default*.



The Inspire Integrated Amplifier will now be selected automatically as the active audio output when it is connected and out of standby. When the Inspire Integrated Amplifier is in standby or not connected, your standard audio hardware will be active.